

THE GEOLOGY GROUP FIELD TRIP TO DEVON

GROUP LEADER CHRIS ROACH INVITES US ALONG



Nineteen of us visited Slapton Ley

Field

Studies

Centre in

south

Devon,

close to the

beautiful

Slapton Sands, for this year's

residential Geology trip.

The nearby coastline

stretches from Start

Point in the west to

Hope's Nose in the east,

but our first day was

inland to Dartmoor.



Slates and dolerite squigged together

The Tors of Dartmoor

Dartmoor lies on the

uppermost part of a

large igneous intrusion

that moved up

through the crust

some 280 million years ago during the



Hope's Nose, a raised beach

Carboniferous period. The typical

granite minerals

were pointed out to

us, large white

feldspar crystals,

quartz, mica and

veins of black

tourmaline. Deep

weathering over

many thousands of

years has caused

cracks and joints in

the granite to

widen, and has given rise to

the tors that stand out in the landscape

today. The granite intruded into even

older rocks that had been laid down

when this part of Britain was far south

of the equator. This was in the

Devonian period, named after the

county itself.

Metamorphic and sedimentary rocks

On the second day in the field, we were

shown some metamorphic rocks,

formed as a result of the hot granite

rising up through Devonian shale and

mudstone. This country rock was

baked, pressurised and recrystallised

to form the grey schist of Start Point

and the slate at Beesands.



Dartmoor



Left, from top:
Dartmoor,
A wall of schist,
Devonian rocks
near Start Point.
Lunch over
(Start Point).

Day three saw us looking for fossils in the limestones of Torbay, and we found sponges, corals, crinoids and bivalves.



Hope's Nose has a well exposed raised beach with oyster and other shells amongst the shingle, laid down a few thousand years ago when the

sea level was several metres higher than at the present day.



We saw evidence of many sea level and climate changes over geological time.

Staying in a Field Centre

During our time at Slapton Ley we were well looked after. There was plenty on offer in addition to the varied and spectacular Geology. There is a delightful nature reserve

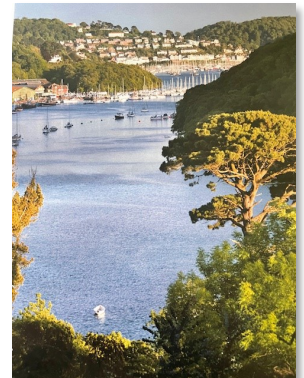


on their doorstep, and several miles of beach to walk along, and a good variety of coastal bird life.

HOLIDAY CLUB NEWS

Elizabeth Bradshaw is unable to continue as Leader of the Holiday Club's trip to the West Country next year.

Please address your enquiries about the trip to
[Margaret Frewin at frewinmargaret@gmail.com](mailto:frewinmargaret@gmail.com)



RENEWALS PROGRESS

Not sure if you have renewed your membership of Lewes u3a?

If we have no record of receiving your payment, you will have received an email about this recently. A further email advising that membership is due to be cancelled if no payment is received will be sent late October.

Send any queries about this to membership@lewesu3a.uk.



LEWES TOWN HALL REPAIRS – WILL OUR GROUPS BE AFFECTED?

Lewes Town Hall is undergoing extensive repairs, as those of us who have crossed Fisher Street will be aware. Although most are external, there has been some movement inside as well.

ITV Series 'Grace'

The Lecture Hall has been used for filming the ITV series 'Grace' (series 5, in case you were wondering!) which has involved a couple of groups temporarily relocating and the redecoration of the Hall.

Screen

No further inconvenience to the u3a groups is anticipated, although there will now be a screen in the Lecture Hall, where previously we had the use of a white back wall, which has now been painted over with a colour. However, we have been assured that the screen provided by the Town Hall is larger and sturdier than our own screen.

Fingers crossed.

THE COMMITTEE OF LEWES U3A INVITES ALL MEMBERS TO ITS ANNUAL GENERAL MEETING

ON 7TH NOVEMBER 2024

AT 2PM

AT ST JOHN SUB CASTRO

ABINGER PLACE, LEWES.

DOORS WILL OPEN AT 1.30PM.

There will be a complimentary teas, coffees, soft drinks and biscuits available up to 2.00pm.

Agenda

Agenda and Annual Reports & Accounts will be emailed prior to the event. For those members not online, documents will be posted to their home address.

Popular Speaker

This year we are proud to introduce one of our most popular speakers, Sonya Baksi, who has kindly agreed to present a short talk:

'Can we ensure a future for our NHS?'

Sonya will look back at how the NHS started, how medical capabilities have developed and how policies toward the NHS have changed, helping to appreciate what needs to be done to ensure a future for our NHS.

***Please note there will be no entry
after 2pm.***

HOW TO CHANGE YOUR OWN MEMBERSHIP DETAILS

By now, all members will have received a request to renew their membership, most by email.

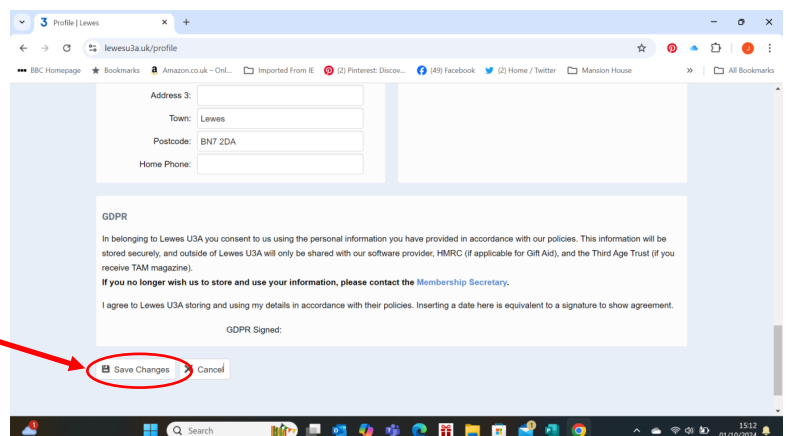
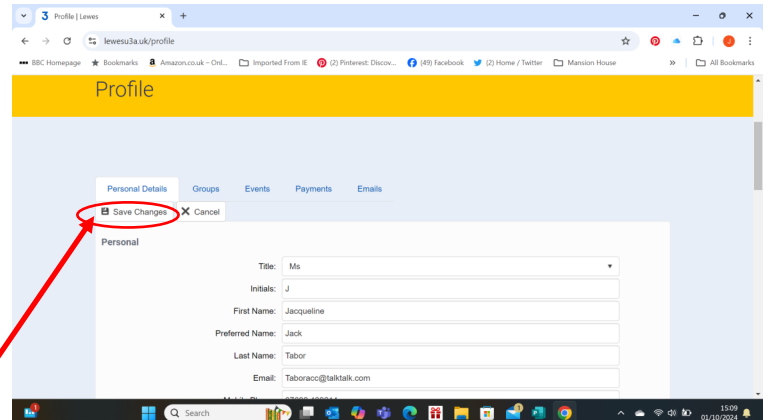
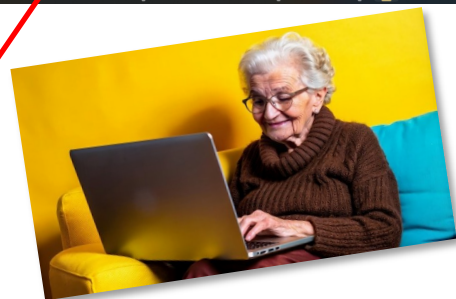
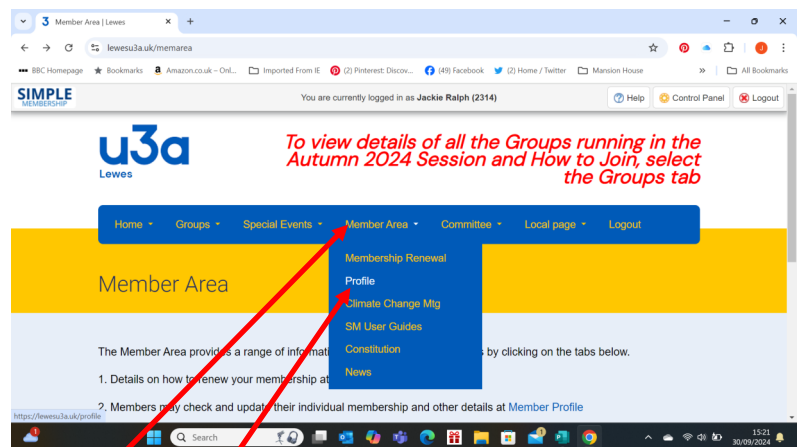
With over 1,000 members, plus many new applications after our Open Morning, our Membership Team has been busy updating the records. However, it is typically at this time that members tell us about changes to their circumstances, such as change of name, address or email.

Did you know that you can update your own records yourself? It's quick and easy, and will be one simple job to tick off when a change takes place.

All you have to do is **log in** to our website (www.lewesu3a.uk), go to Members area, then Profile on the drop down menu.

On your Profile page you can manually alter the details using your computer keyboard. Then, when you are happy with the changes, click on the 'Save Changes' box which you will find on the top left of the screen or at the bottom (or you may need to scroll down).

Job done!



Comments, enquiries or suggestions to: Bulletin@Lewesu3a.uk